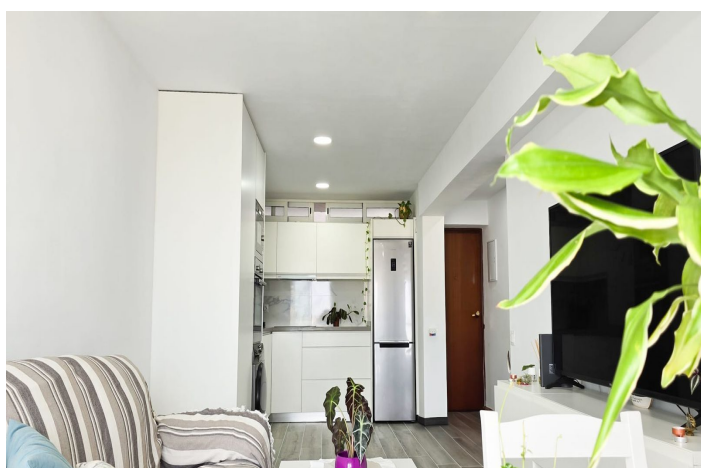


## Middenverdieping appartement te koop in Benalmádena

210.000 €

Referentie: R4875817 Slaapkamers: 1 Badkamers: 1 Perceelgrootte: 49m<sup>2</sup> Terras: 6m<sup>2</sup>





## Costa del Sol, Benalmadena Costa

Stunning Modern Turn-Key Apartment in Arroyo de la Miel – Ideal Investment with Sea Views

Experience the ultimate apartment with this beautifully renovated 6th-floor apartment in the vibrant heart of Benalmádena. Fully modernized and tastefully decorated, this turn-key property offers spectacular sea and mountain views, ready for immediate enjoyment.

Perfectly located just a short stroll from the beach and the bustling Arroyo de la Miel area, this apartment provides unparalleled convenience, with the local train station just minutes away and Málaga Airport a quick 30-minute train ride. It's the ideal spot for both holidaymakers and investors looking for a prime location on the Costa del Sol.

This one-bedroom, one-bathroom apartment is a dream for renters and holiday guests alike.

The spacious living area is bathed in natural light, while the large, fully equipped kitchen offers a welcoming space for dining and entertaining. The development features a communal pool, complete with a poolside snack bar, perfect for sun-soaked relaxation.

Residents enjoy access to well-maintained communal gardens, shared parking, and a secure, manned reception area, ensuring a safe and comfortable environment. While this property does not currently hold a tourist license, the development is highly popular among investors for its exceptional rental potential, making it a smart choice for those seeking returns in the thriving Benalmádena market.

Priced attractively at €210,000, this apartment is a rare find and is expected to move quickly. Contact us today to schedule a viewing and secure your piece of paradise in this highly desirable location.



## Kenmerken:

### Kenmerken

Tillen

Nabij transport

Op maat gemaakte kledingkasten

### Keer bekeken

Zee

### Pool

Gemeenschappelijk

### Tuin

Gemeenschappelijk

### Nutsvoorzieningen

Elektriciteit

### Oriëntatie

Zuidoost

### Instelling

Dicht bij de poort

Dicht bij zee

Dicht bij winkels

Dicht bij de stad

Dicht bij scholen

Dicht bij jachthaven

### Meubilair

Deels ingericht

### Beveiliging

24 -uurs beveiliging

### Categorie

Wederverkoop

### Klimaatcontrole

Airconditioning

### Voorwaarde

Uitstekend

### Keuken

Geheel op maat gemaakt

### Parkeergelegenheid

Straat