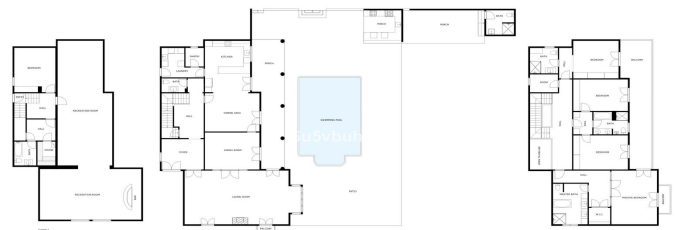


Villa for sale in Marbella

1,699,000 €

Reference: R4661095 Bedrooms: 5 Bathrooms: 4 Plot Size: 1,710m² Build Size: 1,179m²



SIZES ARE APPROXIMATE, ACTUAL MAY VARY.



Costa del Sol, Guadalmina Alta

Welcome to your exquisite haven in Guadalmina Alta, where luxury and convenience converge in perfect harmony. This chalet, located just 10 minutes from the beach and commercial area, offers an unparalleled living experience. Boasting a generous 411 square meters of construction and a newly refurbished house spanning 212 square meters, this property promises a blend of modern elegance and comfort. Spread across three levels, the residence features five bedrooms and four bathrooms, providing ample space for both family and guests. The thoughtful design and recent renovations ensure a contemporary aesthetic and functionality throughout. Nestled within a vast 1,700 square meters of meticulously landscaped gardens, this chalet offers an outdoor oasis. The expansive green space includes a dedicated football camp, perfect for sports enthusiasts or family fun. The terrace, barbecue area, and external kitchen provide the ideal setting for al fresco dining and entertaining. The heated pool invites relaxation, offering year-round enjoyment. A storage room and parking space for three cars add to the practicality of daily living. The property also features a substantial basement with untapped potential. This versatile space could be transformed into a gym, office, independent apartment, cinema, or any other purpose that suits your lifestyle and preferences. The strategic location, mere minutes from the beach and commercial area, ensures easy access to everyday necessities and leisure activities. This chalet in Guadalmina Alta is not just a home; it's a statement of sophisticated living, offering a perfect blend of modern luxury, spacious interiors, and outdoor recreation. Don't miss the opportunity to make this exceptional property your own and elevate your lifestyle to new heights.

Features:

Features

Covered Terrace
Near Transport
Private Terrace
Storage Room
Fitted Wardrobes
Utility Room
Barbeque
Sauna
Basement

Setting

Close To Golf
Close To Town

Climate Control

Fireplace

Pool

Private

Views

Garden
Pool